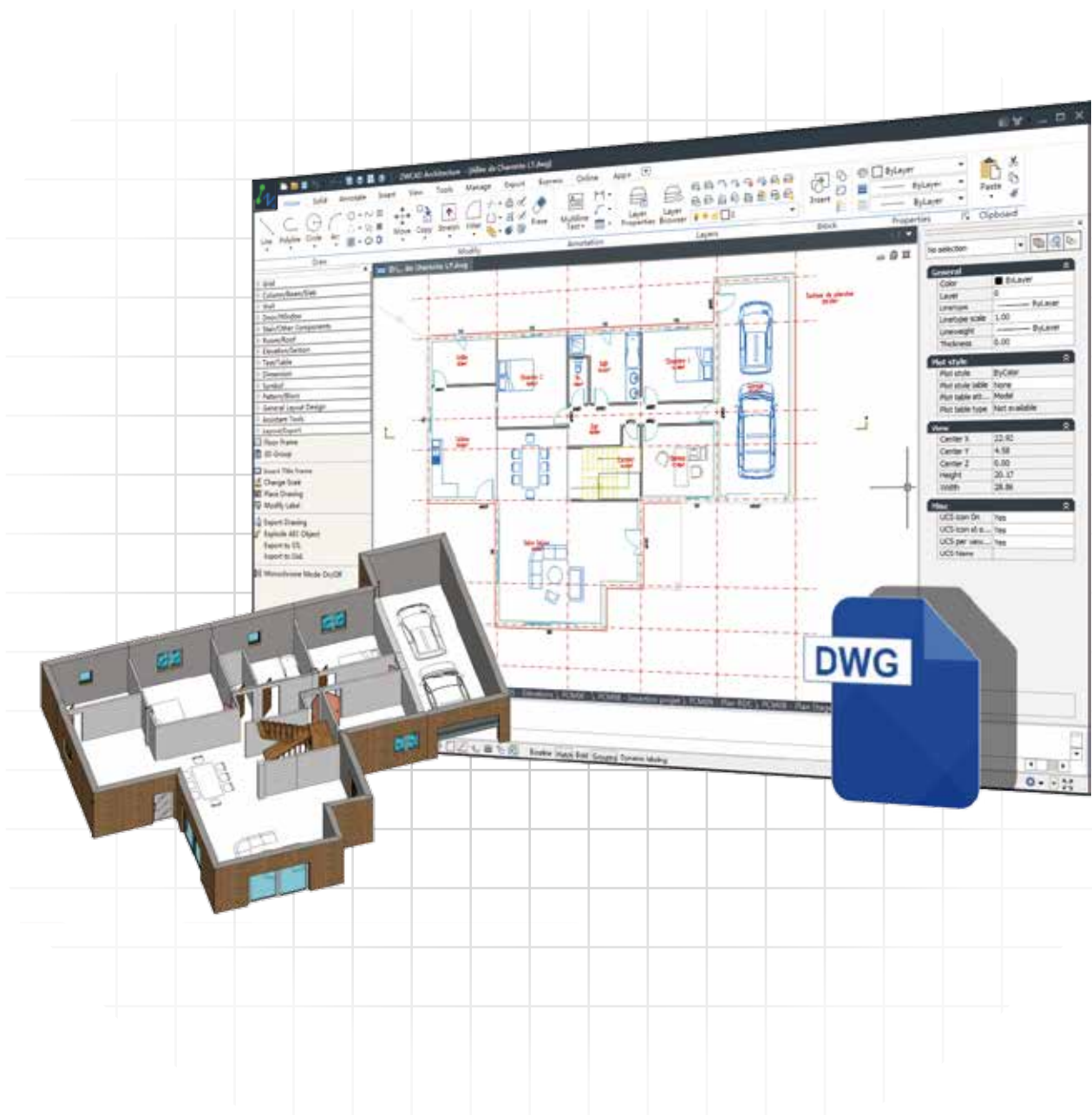


Compatibility

Built on Your Familiar ZWCAD, 100% DWG

ZWCAD Architecture is built on ZWCAD, you can keep working in your familiar drafting environment and using familiar CAD tools. And most importantly, your drawing is saved in DWG format, which enables you to share your design with others seamlessly.



About ZWCAD Architecture

ZWCAD Architecture is a professional CAD software for architects who want immediate productivity. It includes content libraries and tools designed specifically for architectural drawings, which enhance the workflow, automate tedious drafting tasks, reduce errors and increase efficiency.

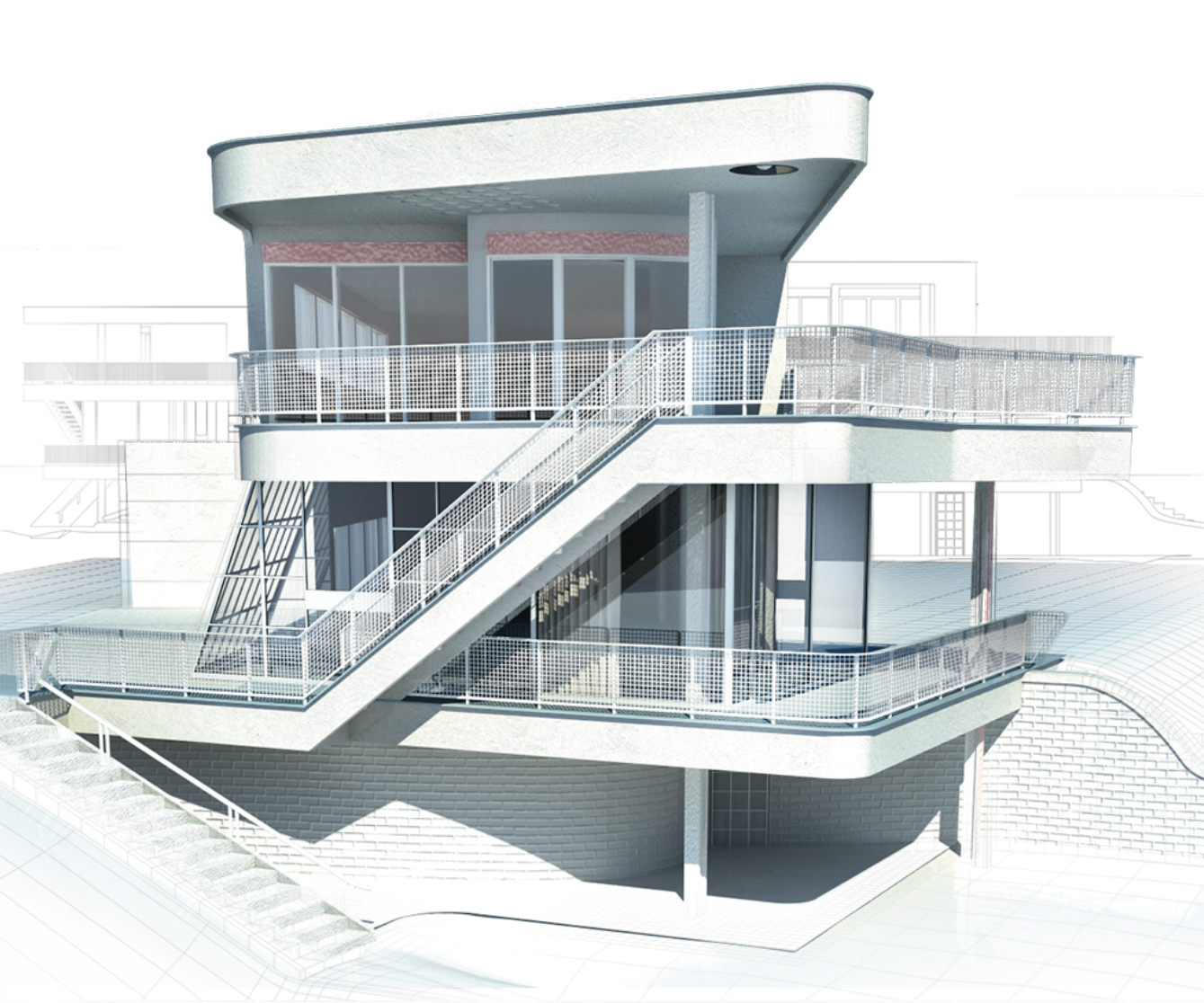
ZWCAD Software CO., LTD.

Add: 4/F, International Science & Technology Communication Center,
No.886, Tianhe North Rd, Guangzhou, 510635, China
Tel: +86-20-38259726 **Fax:** +86-20-38288676
E-mail: sales@zwsoft.com

www.zwsoft.com

All trademarks, trade names or company names referenced herein are used for identification only, and belong to their respective holders.
Copyright 2015 ZWCAD Software Co., Ltd. All rights reserved.
Reproduction in any form without the permission of the copyright holder is prohibited by law.

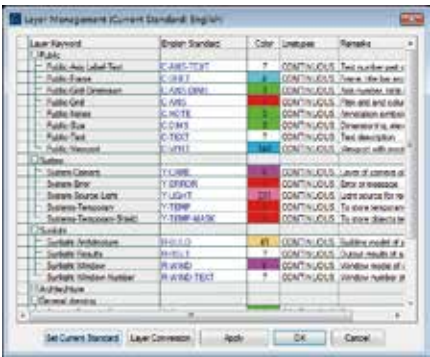
Advanced Architecture Design



Visualization

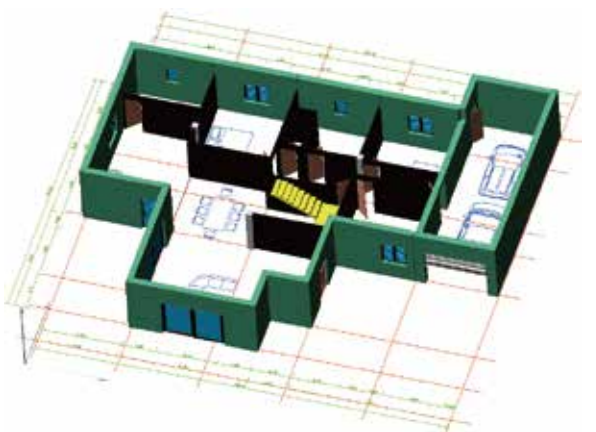
Customized Architecture Layer Management, Automatic Layer Landing

The intelligent layer management system automatically places items on the correct layer, applies color, and linetype as you create your drawing. And, the software can be easily customized to your company requirements.



Drawn in 2D, Created in 3D

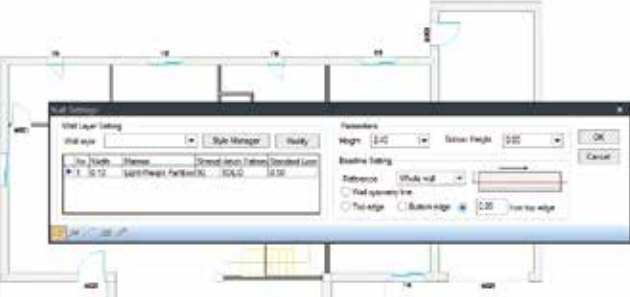
Draw your plans in 2D, switch views, and all of your components can be viewed in 3D. Rest assured that your 3D model remains consistent with your 2D plan and vice versa. The visual style Gouraud allows you to understand the project intuitively.



Parametric Intelligent Building Components

Directly create walls, doors, windows

Generate walls from single lines and grids. Doors and types of windows such as common windows, bay windows, arc windows, and rectangle holes are available for you to choose from. Everything is resizable by double clicking on the object and modifying the parametric. If you remove a door or window, the wall will mend itself automatically.



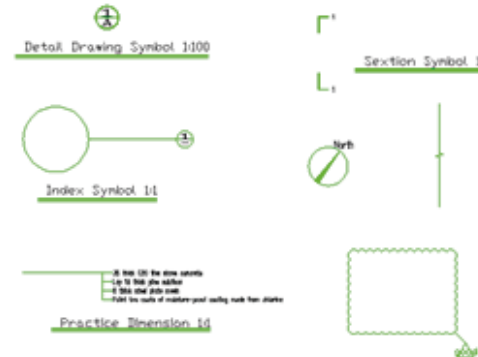
Re-edit beams, slabs, columns

Beams, slabs, and columns can be created with specified tools. These parametric objects can be edited by double-clicking and/or from the properties palette. Generate and modify them as you like by using the grips.



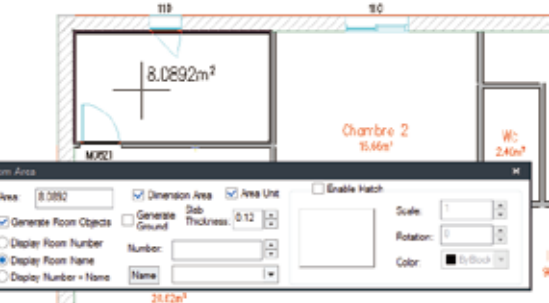
Specified Architecture dimension and symbols

Special tools are provided for architecture annotation. Dimension like adding grid numbers, adding door/window liner dimension in batch. This also allows for the addition of symbols such as elevation, index symbol, detailed drawing symbol, compass, and more.



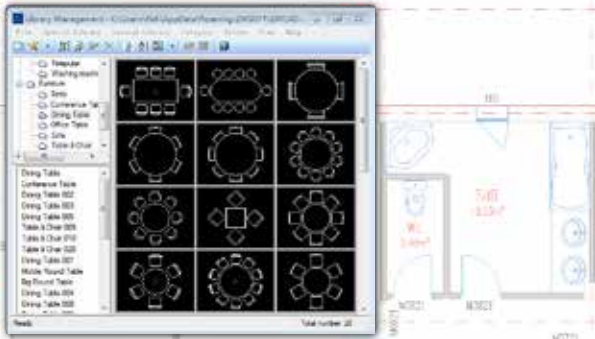
Annotate room easily

Intelligent tools are provided to recognize rooms add hatch automatically, and turn on or off room name and room area labels. At last generate the room table with a few clicks.



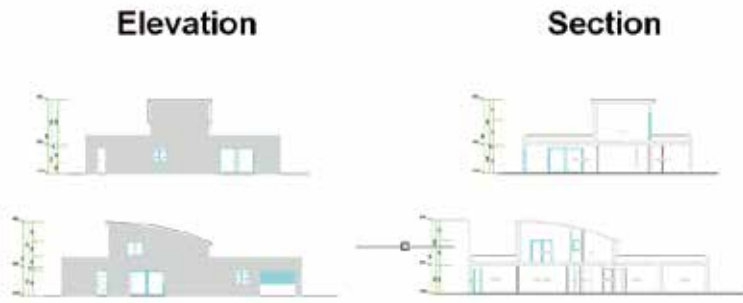
Comprehensive Built-in Block Library

The built-in Block Library contains hundreds of components that let you detail your plans with ease. Components like furniture, kitchenware, appliances, vehicles, plants and more are provided. You can easily insert them into the drawing and eliminate the need to draw from scratch.



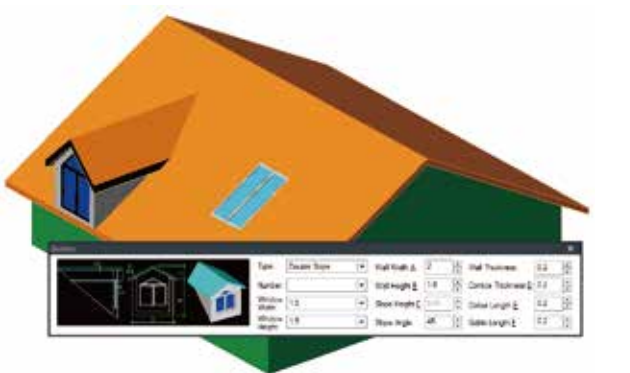
Automatically-generate Elevation and Section

From the completed 2D plan, elevation and section can be generated with a few clicks. Compose floors, walls, doors, stairs, and roofs from the 2D plan.



Add roof, dormers and skylights with a few clicks

ZWCAD Architecture offers tool to create roofs from walls or polyline. From simple to complex, flat to slope, generate different types of roof with a few clicks. You can also add dormer windows and skylights as you wish.



Annotation

One click to generate door/window table

It takes just one click to generate doors and window tables to the drawing, no need for manual summary. This is a super intelligent tool that ensures accuracy and efficiency.

